



FOAM CHAMBERS

DESCRIPTION

The **ISS – Chemguard** Foam Chamber consists of a foam expansion chamber and an integral foam maker. The foam chamber is installed on a flammable liquid storage tank just below the roof joint. The foam solution is piped to the chamber from outside the hazard. Upon entering the chamber, the foam solution is expanded and then discharged against a deflector inside the storage tank. The deflector directs the foam against the inside wall of the storage tank. This reduces the submergence of the foam and agitation of the fuel surface. (N.F.P.A. Type II Application).

FEATURES

- Choice of four models to cover all flow requirements.
- Top of chamber has handle which simplifies inspection access to the vapor seal.
- Frangible glass vapor seal is provided. The glass is scored on one side and designed to break at a minimum 10 psi but not greater than 20 psi.
- Chamber manufactured in ASTM A366 carbon steel with a 304 stainless steel screen covering the foam maker air inlets.
- All foam chambers come with standard size flat faced flanges and gaskets.



ORDERING INFORMATION

When ordering a **ISS** Foam Chamber specify :-

1. Type of paint finish required.
2. Minimum inlet pressure at base of foam chamber and foam solution flow rate required

(It is recommended a minimum of 40 PSI inlet pressure be available).

MODELS

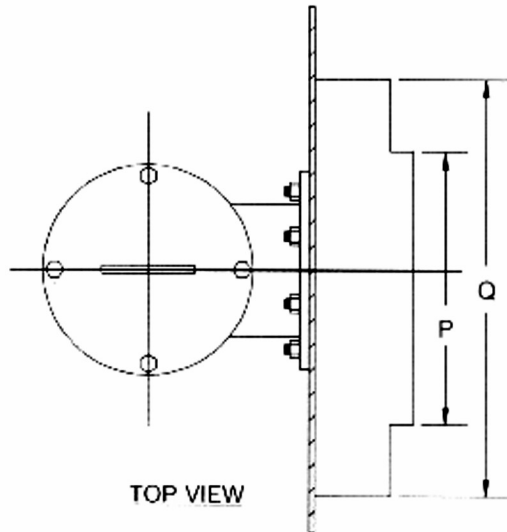
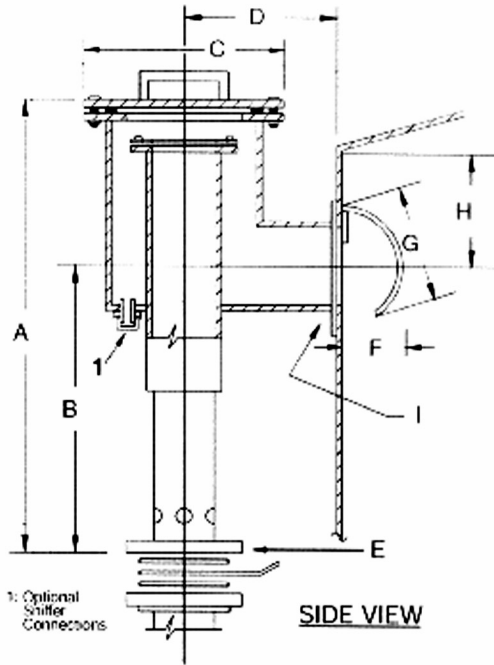
EGY-FC 2.5
EGY-FC 3
EGY-FC 4
EGY-FC 6

FLOW

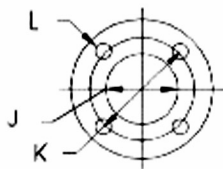
50 - 150 gpm
100 – 300 gpm
180 - 625 gpm
395 - 1050 gpm

CHAMBER DIMENSIONS

	EGY-FC 2.5	EGY-FC 3	EGY-FC 4	EGY-FC 6
A	29 IN.	34 3/4 IN.	36 1/2 IN.	44 3/4 IN.
B	17 1/2 IN.	22 1/4 IN.	23 1/2 IN.	27 1/2 IN.
C	10 5/8 IN.	12 3/4 IN.	14 3/4 IN.	18 IN.
D	7 IN.	9 IN.	10 IN.	12 IN.
E	2 1/2 IN.	3 IN.	4 IN.	6 IN.
F	3 1/4 IN.	4 1/4 IN.	5 3/8 IN.	8 3/8 IN.
G	6 1/2 IN.	5 1/2 IN.	10 1/2 IN.	12 1/2 IN.
H	8 IN.	9 1/2 IN.	11 IN.	12 IN.
I	4 IN.	6 IN.	8 IN.	10 IN.
J	2 7/8 IN.	3 1/2 IN.	4 1/2 IN.	6 5/8 IN.
K	5 1/2 IN.	6 IN.	7 1/2 IN.	9 1/2 IN.
L	3/4 IN.	3/4 IN.	7/8 IN.	7/8 IN.
M	4 1/2 IN.	6 5/8 IN.	8 5/8 IN.	10 3/4 IN.
N	7 1/2 IN.	9 1/2 IN.	11 3/4 IN.	14 1/4 IN.
O	3/4 IN.	7/8 IN.	7/8 IN.	1 IN.
P	8 IN.	12 IN.	16 IN.	20 IN.
Q	12 IN.	18 IN.	24 IN.	30 IN.

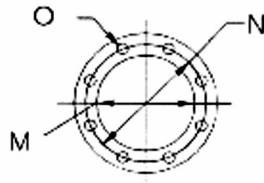


INLET FLANGE
(E DETAIL)

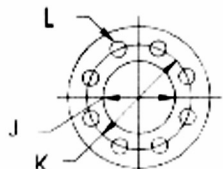


EGY-FC 2.5, 3

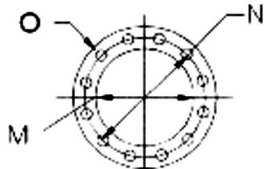
OUTLET FLANGE
(I DETAIL)



EGY-FC 2.5, 3, 4



EGY-FC 4, 6



EGY-FC 6

CONTACT US

المصنع : مدينة العبور المنطقة الصناعية
بلوك ١٢٠٤٠ - قطعة ٢٥

الإدارة: ٤٩ عباس العقاد- مدينة نصر - القاهرة

تليفون: ٤٠١٧٤٢٠ - ٢٦٠٢٨٠٨ - فاكس: ٣٦٢٧٣١٧

Factory: **Al-Obour Industrial City,**
Block 13040 Zone A

Head Office: **49 Abbas El Akkad St. Nasr City –**
Cairo - EGYPT

Tel : 4017430 - 2602808 Fax : 2627317

Web Site : www.iss-egypt.org

E-mail: iss@starnet.com.eg