

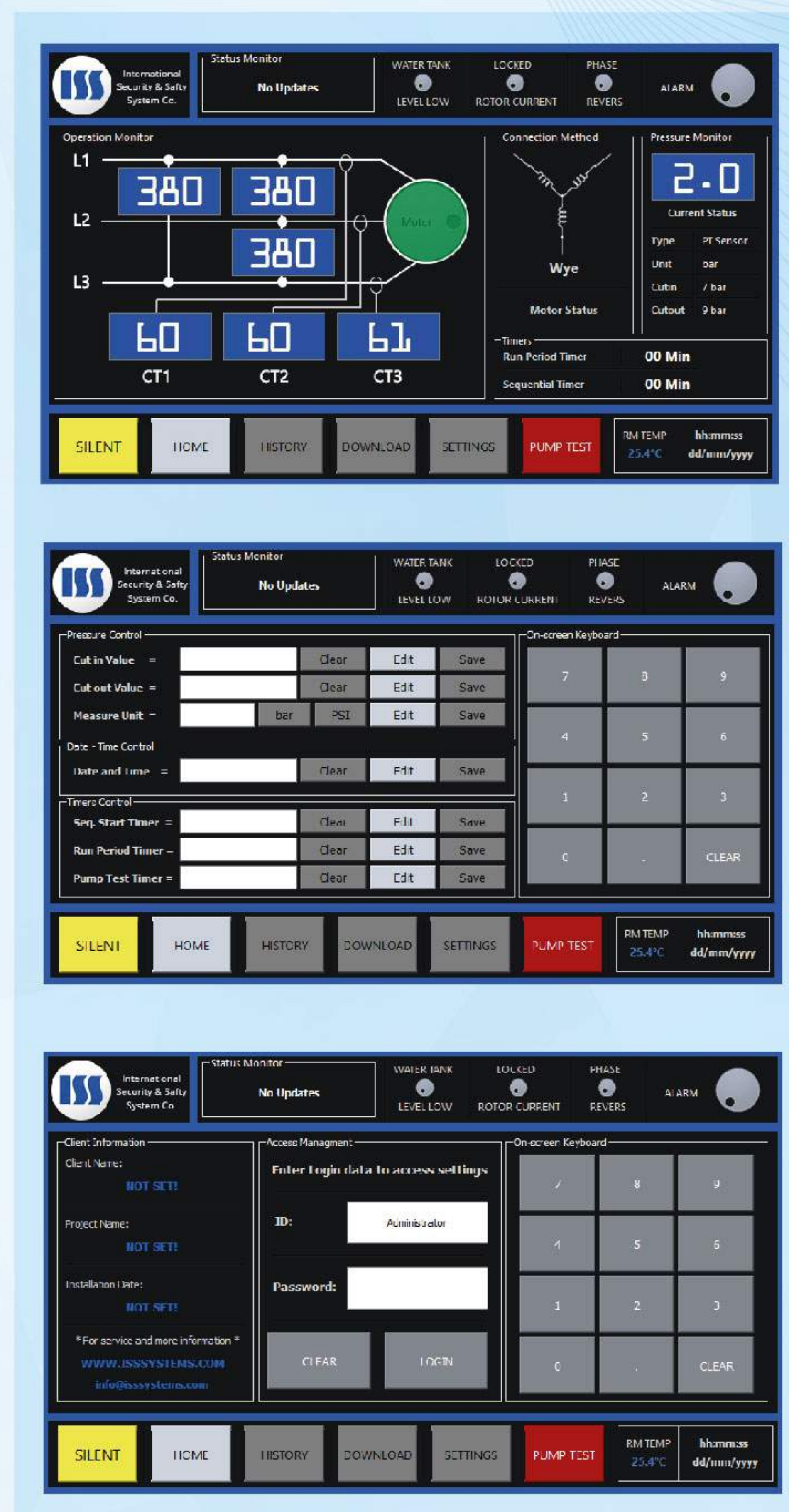
Fire Pump Controllers



Fire Pumps Controllers – C€

Features:

- 7-inch color touchscreen working -30°C up to +60°C
- 6 adjustable settings & parameters.
- Multi-processor patented architecture x64
- 5,000 log events.
- Accepts pressure transmitters or pressure switches.
- Communicate via GSM, GPRS, TCP-IP, SNMP, ETHERNET (Optional).
- On-site trouble shooting.
- USB Port Located on the front for easier access to Controller Storage.
- Historical Data Filters to be viewed on-screen (Alarms, Events, Actions) or Live update for status.
- Historical Data Can be downloaded to memory drive through USB port.
- GSM alarm condition alerts with time stamp.



Electric Controller – model # EGY-ELPC

Features:

- Designed for use with electric motor driven fire pumps.
- Wye-Delta Openstarting method.
- Manufactured in accordance with the NFPA 20 and CE Certified.
- Models range from 5 to 250 horsepower, 380V 50 / 60 Hz
- Automatic start and a manual start / manual stop buttons
- Locked rotor protector
- Readings
 - Voltage and amperage display
 - Cut-in, cut-out and continuous system pressure
- Visual indications for operating method
 - Standard Conditions
 - Alarm Conditions
 - Color coded for criticalness
- Remote Alarms
 - Power available
 - Phase reversal
 - Motor run
 - Common pump room alarm (field re-assignable)
 - Common Motor trouble (field re-assignable) .



Diesel Controller – model # EGY-DLPC

Features:

- Designed to control Diesel Engine Driven Fire Pumps
- Built to the latest NFPA 20 Standards, CE Certified
- Manual and Automatic Operation
- Pressure, voltage, RPM and event Recorder
- AC: 220V to 240V/1ph/50-60hz
- DC: 24VDC
- Battery chargers: Two independent fully automatic 10A continuous charge
- Readings:
 - o Electrical readings
 - o Battery (x2) voltage
 - o Charging (x2) amperage
 - o Pressure readings
 - o Cut-in cut-out and continuous system pressure.
- Alarm contacts for remote indication
 - o Engine run
 - o Common controller trouble
 - o Common engine trouble
 - o Common pump room alarm (field re-assignable)
 - o H-O-A in OFF or MANUAL
- Visual and audible alarms
 - o Battery #1 & #2 failure
 - o Low oil pressure
 - o High engine temperature
 - o Overspeed/Engine run/Fail to start



Jockey Controller – model # EGY-JLPC

Features:

- 3.5" Colored Screen
- Visual indicators and icons
- Automatic motor run
- Automatic mode
- Off mode
- Pump start counter
- Elapsed time meter (hours / non-resettable)
- Timers
- Minimum run period timer
- Sequential start timer
- OFF-AUTO Selector Switch



AQUA Fire Pumps range (100 - 5000) gpm

CE Compliance

Declaration of Compliance

This Declaration of Compliance is hereby issued to the below named company.

Applicable Directive(s): 2006/42/EC- Machinery Directive,
2006/95/EC- Low Voltage (LVD)

In accordance with the following applicable standards:
EN 13478:2001+A1:2008, EN 1028-2:2002+A1:2008,
EN 1846-2:2009+A1:2013, EN 13241-1:2003+A1:2011
EN 14044:2014, EN 14466:2005+A1:2008, EN 14710-2:2005+A2:2008
EN 50267-2-3:1998, EN 60332-3-25:2009

UR
UNIVERSAL REGISTRARS

CE
Issued on 28 Feb 2018

System Certification
UR
CE Compliance

UR
UNIVERSAL REGISTRARS

General Information

Applicant — ISS CO SAE,
International Security & Safety Systems,
49-Abbass El Akkad Street Nasr City- Cairo-Egypt.

Manufacturer — Same as above

Product Description — AQUA range of FirePumps.
Locally assembled (HSC-ES- VT) Fire Pumps and
AQUA -touch screen controllers for Electric driven
and Diesel driven pumps and jockey pumps. ranges
from (100-5000 gpm)- specifications as per NFPA.

Trade Mark — AQUA FirePumps / Controllers.

Ranges — 100-5000 GPM

Certificate number: 24656

This certificate is valid from 28-Feb-2018 until 27-Feb-2019.

This Certificate is issued under following conditions:
The product is declared by the applicant as complying with the applicable
directives. UR has performed a review of the technical information of the
product. The applicant is required to inform UR of any changes to its
product design and technical documentation. The CE mark may be used by
the applicant, for this product, under the sole responsibility of the applicant.

David Wilmer
David Wilmer
Certification Manager

UNIVERSAL REGISTRARS
www.universalregistrars.com

This certificate can be verified at the above URL.
The certificate remains the property of Universal Registrars, to whom it
must be returned on request. Lack of fulfillment of certification terms
and conditions at all times, may render this certificate invalid.

The product liability rests with the manufacturer in accordance with their committed specifications and contractual obligations,
including applicable standards. The CE mark shown above is for reference only and does not indicate accreditation.
Universal Registrars does not accept any liability arising out of this certificate.



CE Packaged Fire Pumps - 100 - 5000 gpm.

Above picture is for a 500 gpm - 8 bar packed pumps - tested at factory
and delivered to a project in AFRICA

HEAD OFFICE :

49 Abbas El Akkad st. - Nasr City - Cairo - Egypt

Tel : +202 (24017430 - 22602808) Fax : +202 (22627317)

E-mail : info@issystems.com

FACTORY :

Al Obour Industrial Area Block 13040 - Zone A

Tel : +202 (46651240) Fax : +202 (46651241)

Web Site : www.issystems.com